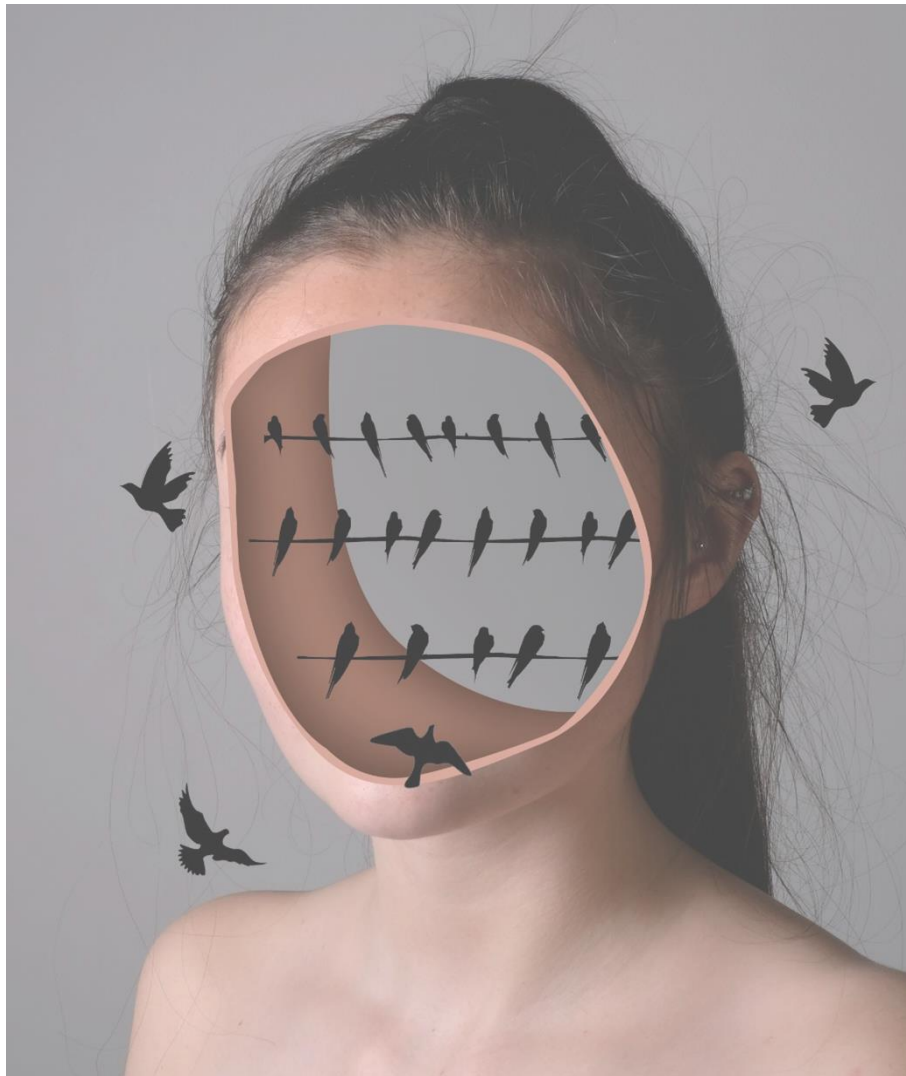


A LEVEL PHOTOGRAPHY



Year 1

Term one consists of a range of short range tasks introducing students to the skills and techniques they will use on the course, including:

- Camera functions
- Image composition
- Printing and processing film in the dark room
- Studio lighting
- Photoshop editing

Terms two and three consist of a series of longer tasks designed to help students refine their skills in identifying and developing project ideas. Work from these projects may form the basis of the Personal Investigation in year 2.

Year 2

The work in year two forms 100% of the A Level grade and consists of two units of work.

Unit 1: Personal Investigation - 60% of A Level Grade

Consists of two integrated parts, theme set by student

- A major in-depth critical, practical and theoretical investigative project/portfolio and outcome/s based on themes and subject matter that have personal significance.
- A related study: an extended response of a guided minimum of 1,000 words.

Unit 2: Externally Set Task – 40% of A Level Grade

Students choose one idea from themes set by exam board. A period of preparatory study based on a starting point set by the exam board followed by a 15 hour period of sustained focused work completed under exam conditions.

Materials and Equipment

Photography uses a large amount of materials and resources. You are required to pay for a starter pack of photography materials before the course starts enabling you to have the printing paper, film, printing facility etc. to complete the first term. After this you will be required to purchase additional materials as needed. If you require financial help please ask about the **Student Hardship Fund**.

The materials include:

- Additional Printer credit voucher
Inkjet Paper and other special printing paper
- Sketchbooks
- Photographic paper
- Black and white Films and processing chemicals

Cameras

You will need a **DSLR camera or equivalent**. You need to be able to set the shutter speed and aperture manually, being able to change lenses is also highly recommended. The camera doesn't need to be prohibitively expensive, entry level models are fine.



If sourcing a camera is an issue there are a small number of cameras in the department available to borrow, but at busy times demand may outstrip supply.

CONTACT US:

Telephone: 01905 362600

Email: enquiries@wsfc.ac.uk