

A Level Photography

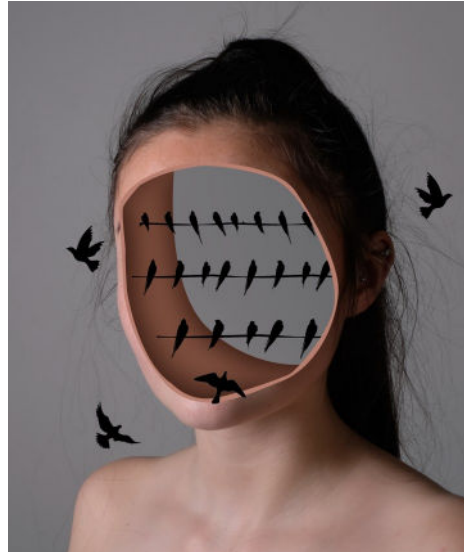
Why study photography?

Studying Photography will deepen your understanding of the visual world across different times and cultures. It leads to a wide range of career opportunities in creative industries. It will also improve your use of transferrable skills which will be useful in your other subjects, university and the workplace: Decision making, digital understanding, communication, confidence, presentation, collaboration, self-analysis and research.

Year 1

Term one consists of a range of short tasks introducing students to the media, skills and techniques they will use on the course, including: Camera functions, image composition, analogue black and white darkroom, studio lighting, Adobe Creative Cloud: PhotoShop & Lightroom.

Terms two and three consist of a series of longer tasks designed to help students refine their skills in identifying and developing project ideas. Work from these projects may form the basis of the Personal Investigation in year 2.



Year 2 student work

Year 2: The work in year two forms 100% of the A Level grade.

Unit 1: Personal Investigation - 60% of A Level Grade

Consists of two integrated parts, theme set by student.

1. a major in-depth critical, practical and theoretical investigative project/portfolio and outcome/s based on themes and subject matter that have personal significance.
2. a related study: an extended response of a guided minimum of 1000 words.

Unit 2: Externally Set Task – 40% of A Level Grade

Students choose one idea from themes set by exam board. A period of preparatory study based on a starting point set by the exam board followed by a 15 hour period of sustained focused work completed under exam conditions.

Course Ethos

Students are encouraged to become independent learners through prioritising multiple tasks and deadlines within larger projects. After the first term students are free to work in any photographic media and techniques, they are encouraged to refine and experiment with areas of strength and enjoyment. Project themes are deliberately broad to allow students to choose their own subject matter. Students are then free to develop ideas and themes relevant and personal to their lives and interests, leading into the more independent nature of the course in year two.

Results

Students achieve highly every year with over 66% of students attaining between an A* - B in each of the past four academic years.

Progression

Every year multiple students go on to study on Photography based degree courses around the country.

Materials and Equipment

Photography uses a large amount of materials and resources. You are required to pay for a starter pack of photography materials before the course starts enabling you to have the printing paper, film, printing facility etc. to complete the first term. After this you will be required to purchase additional materials as needed. If you require financial help please ask about the **Student Hardship Fund**.

Cameras

You will need a **DSLR camera or equivalent**. You need to be able to set the shutter speed and aperture manually, being able to change lenses is also highly recommended. The camera doesn't need to be prohibitively expensive, entry level models are fine.

If sourcing a camera is an issue there are a small number of cameras in the department available to borrow, but at busy times demand may outstrip supply.

These are three cameras that would be suitable for the course, anything with similar or better specifications will be fine: **Nikon D3300, Canon EOS 4000D, Fujifilm A-X20**.

Please contact me if you need further information:
joe.blackardy@wsfc.ac.uk

A Level Photography

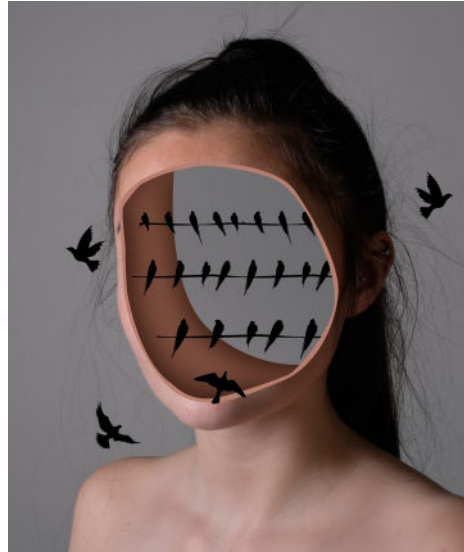
Why study photography?

Studying Photography will deepen your understanding of the visual world across different times and cultures. It leads to a wide range of career opportunities in creative industries. It will also improve your use of transferrable skills which will be useful in your other subjects, university and the workplace: Decision making, digital understanding, communication, confidence, presentation, collaboration, self-analysis and research.

Year 1

Term one consists of a range of short tasks introducing students to the media, skills and techniques they will use on the course, including: Camera functions, image composition, analogue black and white darkroom, studio lighting, Adobe Creative Cloud: PhotoShop & Lightroom.

Terms two and three consist of a series of longer tasks designed to help students refine their skills in identifying and developing project ideas. Work from these projects may form the basis of the Personal Investigation in year 2.



Year 2 student work

Year 2: The work in year two forms 100% of the A Level grade.

Unit 1: Personal Investigation - 60% of A Level Grade

Consists of two integrated parts, theme set by student.

1. a major in-depth critical, practical and theoretical investigative project/portfolio and outcome/s based on themes and subject matter that have personal significance.
2. a related study: an extended response of a guided minimum of 1000 words.

Unit 2: Externally Set Task – 40% of A Level Grade

Students choose one idea from themes set by exam board. A period of preparatory study based on a starting point set by the exam board followed by a 15 hour period of sustained focused work completed under exam conditions.

Course Ethos

Students are encouraged to become independent learners through prioritising multiple tasks and deadlines within larger projects. After the first term students are free to work in any photographic media and techniques, they are encouraged to refine and experiment with areas of strength and enjoyment. Project themes are deliberately broad to allow students to choose their own subject matter. Students are then free to develop ideas and themes relevant and personal to their lives and interests, leading into the more independent nature of the course in year two.

Results

Students achieve highly every year with over 66% of students attaining between an A* - B in each of the past four academic years.

Progression

Every year multiple students go on to study on Photography based degree courses around the country.

Materials and Equipment

Photography uses a large amount of materials and resources. You are required to pay for a starter pack of photography materials before the course starts enabling you to have the printing paper, film, printing facility etc. to complete the first term. After this you will be required to purchase additional materials as needed. If you require financial help please ask about the **Student Hardship Fund**.

Cameras

You will need a **DSLR camera or equivalent**. You need to be able to set the shutter speed and aperture manually, being able to change lenses is also highly recommended. The camera doesn't need to be prohibitively expensive, entry level models are fine.

If sourcing a camera is an issue there are a small number of cameras in the department available to borrow, but at busy times demand may outstrip supply.

These are three cameras that would be suitable for the course, anything with similar or better specifications will be fine: **Nikon D3300, Canon EOS 4000D, Fujifilm A-X20**.

Please contact me if you need further information:
joe.blackardy@wsfc.ac.uk