

# THE BIGGER PICTURE

# WORCESTER CITY



## WORCESTER CITY KEY INDUSTRIES

1 // HEALTH

2 // RETAIL

3 // EDUCATION

## KEY EMPLOYERS

NHS

WORCESTERSHIRE CHILDRENS FIRST

BOSCH THERMOTECHNOLOGY LTD

JOY GLOBAL (UK) LIMITED

YAMAZAKI MAZAK

SANCTUARY CARE LIMITED

SOUTHCO MANUFACTURING LIMITED

OPEN GI

HARRISON CLARK RICKERBYS SERVICES LIMITED

ST. RICHARD'S HOSPICE FOUNDATION

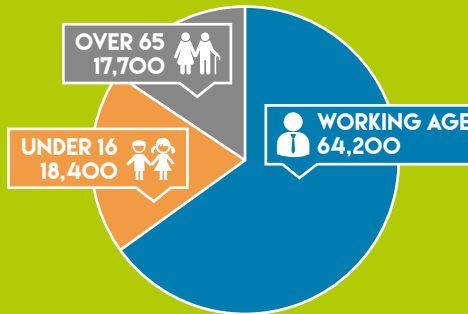
COMPCO FIRE SYSTEMS

STANFORD MARSH LIMITED

PLATFORM HOUSING GROUP

## WORCESTER CITY KEY INFO

TOTAL POPULATION: 100,300



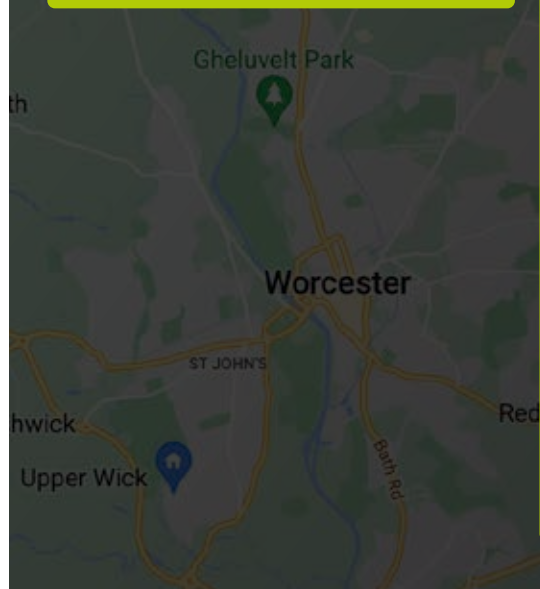
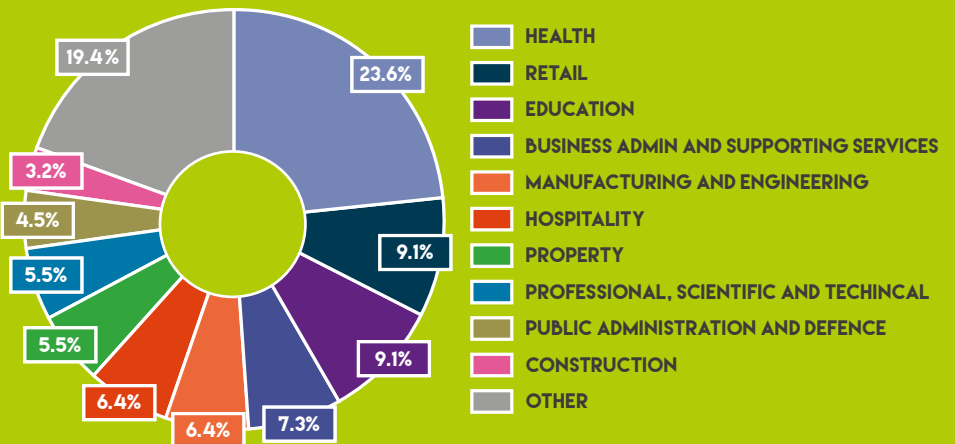
♀ (50.7%) 50,900    49,400 (49.3%) ♂



WHITE 93.4%  
 MIXED/MULTIPLE ETHNIC GROUPS 1.4%  
 ASIAN / BRITISH ASIAN 4.4%  
 BLACK / BLACK BRITISH 0.5%  
 OTHER 0.3%



## TOP 10 INDUSTRY SECTORS



# THE BIGGER PICTURE

# MALVERN HILLS



## MALVERN HILLS KEY INDUSTRIES

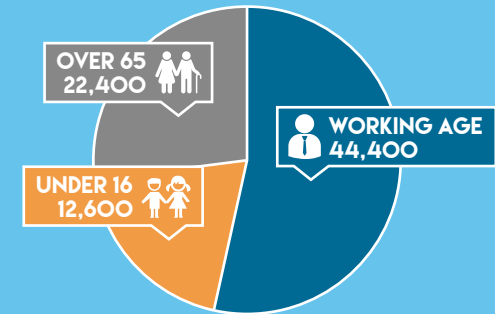
- 1 // MANUFACTURING
- 2 // EDUCATION
- 3 // HEALTH
- 4 // RETAIL
- 5 // BUSINESS ADMIN

## KEY EMPLOYERS

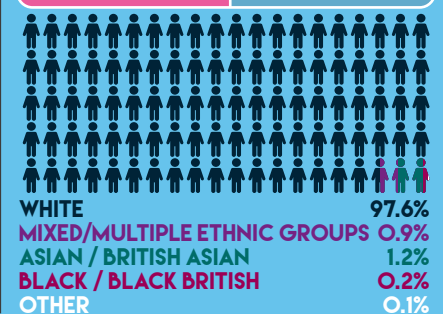
- MALVERN PANALYTICAL LIMITED
- SPELLER METCALFE MALVERN LIMITED
- AUTOMATED PACKAGING SYSTEMS LIMITED
- MORGAN MOTOR COMPANY LIMITED
- ENGLISH BRAIDS LIMITED
- BORWELL LIMITED
- THE ABBEY HOTEL
- NEOPERL UK LIMITED
- NHS

## MALVERN HILLS KEY INFO

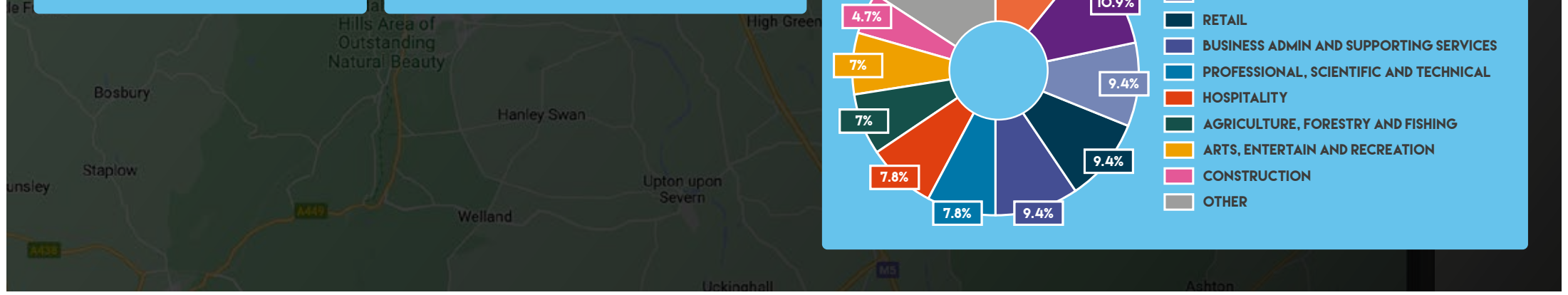
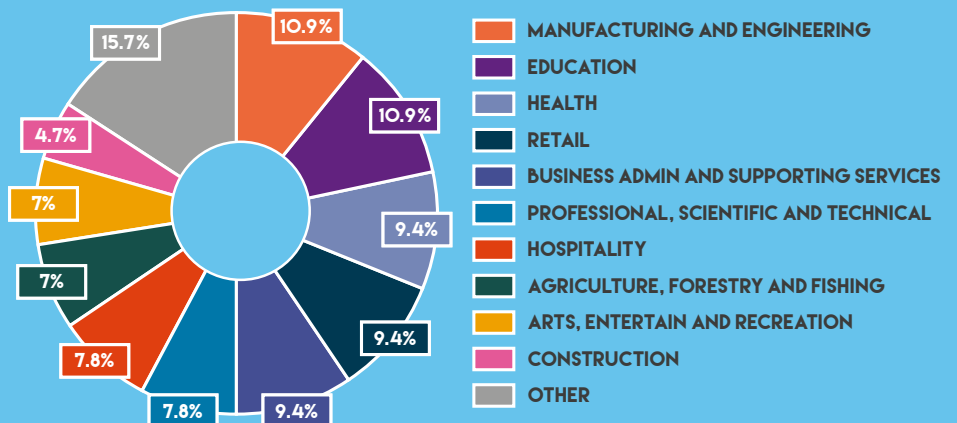
TOTAL POPULATION: 79,400



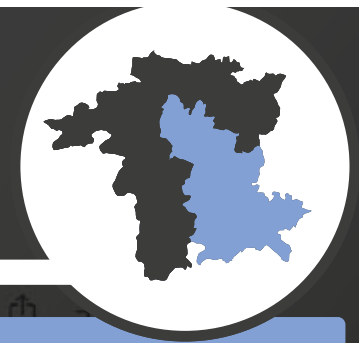
♀ (51.3%) 40,700    38,700 (48.7%) ♂



## TOP 10 INDUSTRY SECTORS



# THE BIGGER PICTURE WYCHAVON



## WYCHAVON KEY INDUSTRIES

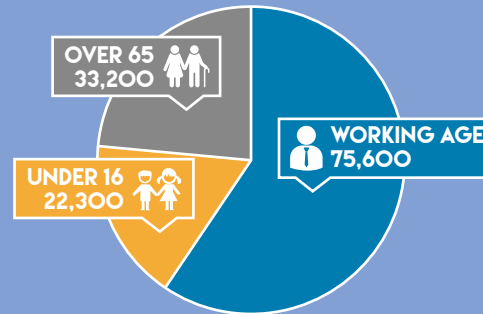
- 1 // MANUFACTURING AND ENGINEERING
- 2 // RETAIL
- 3 // HEALTH
- 4 // TRANSPORT AND STORAGE

## KEY EMPLOYERS

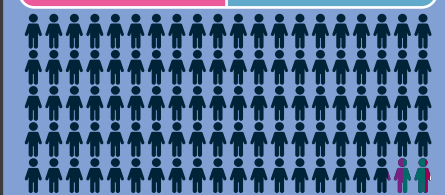
- ASPENS
- KANES FOODS
- SIMS GROUP
- KIMAL
- KOITO EUROPE LIMITED
- MAINSTAY RESIDENTIAL LIMITED
- FOREST GARDEN LIMITED
- PRIMAFRUIT LIMITED
- WEBBS GARDEN CENTRES LIMITED
- SEVERN WASTE SERVICES LIMITED
- DRP (UK) LIMITED
- VAX
- CP FOODS (UK) LIMITED
- NHS

## WYCHAVON CITY KEY INFO

TOTAL POPULATION: 131,100



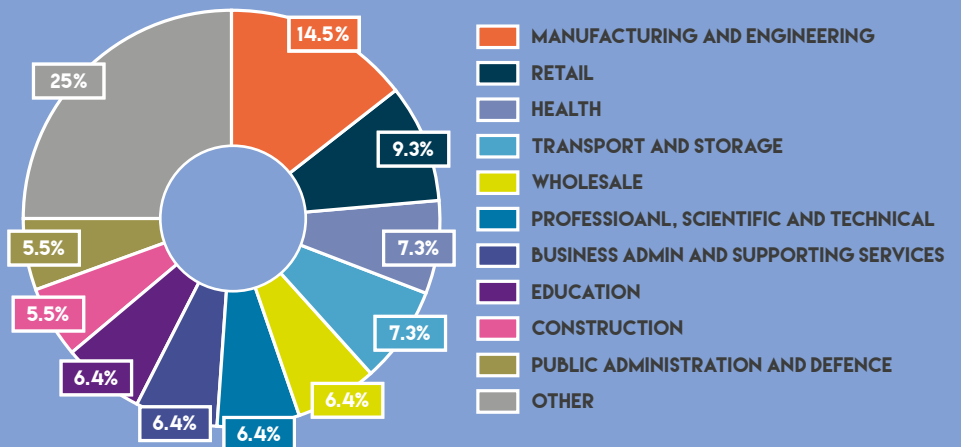
♀ (51.1%) 67,000    64,100 (48.9%) ♂



WHITE 97.9%  
 MIXED/MULTIPLE ETHNIC GROUPS 0.8%  
 ASIAN / BRITISH ASIAN 1.0%  
 BLACK / BLACK BRITISH 0.2%  
 OTHER 0.1%



## TOP 10 INDUSTRY SECTORS



# THE BIGGER PICTURE

# WYRE FOREST



## WYRE FOREST KEY INDUSTRIES

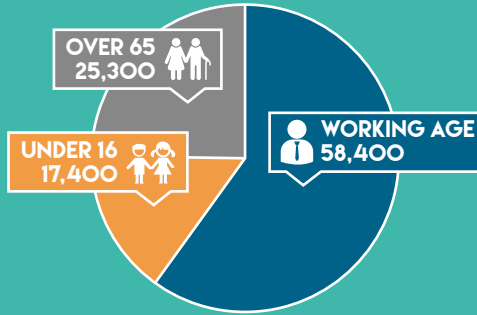
- 1 // RETAIL
- 2 // HEALTH
- 3 // MANUFACTURING AND ENGINEERING
- 4 // BUSINESS ADMIN AND SUPPORTING SERVICES

## KEY EMPLOYERS

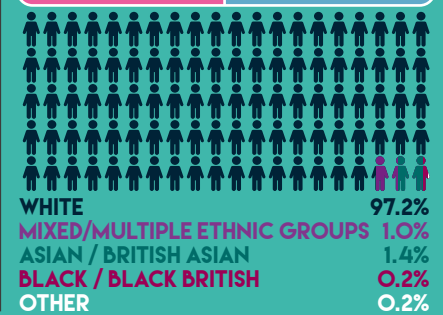
- ROXEL UK
- PHOSTERS
- GEMINI ARC
- MORGAN ADVANCED CERAMICS
- WEST MIDLAND SAFARI PARK LIMITED
- TITAN STEEL WHEELS LIMITED
- OGL COMPUTER SERVICES GROUP LIMITED
- AMADA UNITED KINGDOM LIMITED
- THURSFIELDS LEGAL LIMITED
- SEVERN VALLEY RAILWAY
- MFG SOLICITORS LLP
- BARTON FIRTOP
- BEAKBANE LIMITED
- GREENSAFE IT LIMITED
- VISION LABS LTD.
- NHS

## WYRE FOREST KEY INFO

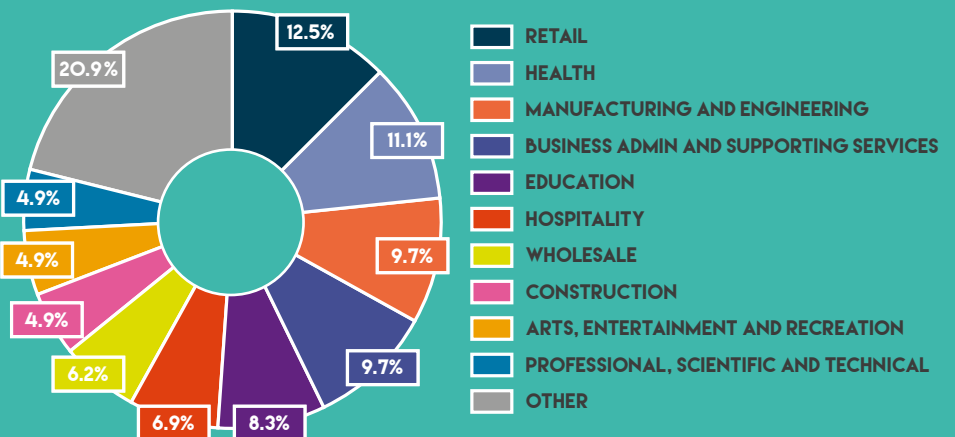
TOTAL POPULATION: 101,100



♀ (50.7%) 51,300    49,800 (49.3%) ♂



## TOP 10 INDUSTRY SECTORS



# THE BIGGER PICTURE

# BROMSGROVE



## BROMSGROVE KEY INDUSTRIES

1 // **BUSINESS ADMIN AND SUPPORTING SERVICES**

2 // **HEALTH**

3 // **EDUCATION**

## KEY EMPLOYERS

### THE BEST CONNECTION

PEARL GROUP MANAGEMENT SERVICES LIMITED

M & E GLOBAL RESOURCES LIMITED

SELCO TRADE CENTRES LIMITED

NUTRIUS UK TOPCO LIMITED

OAKLAND INTERNATIONAL

EXCOOL

STEATITE

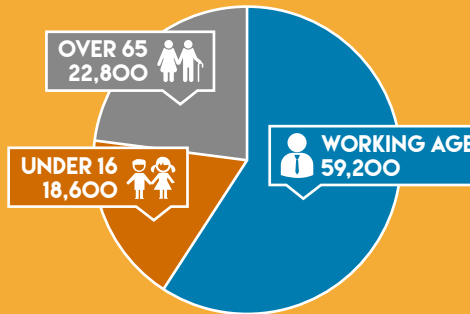
G T ACCESS LIMITED

ALL-CLEAN SUPPORT SERVICES LTD

NHS

## BROMSGROVE KEY INFO

TOTAL POPULATION: 100,600



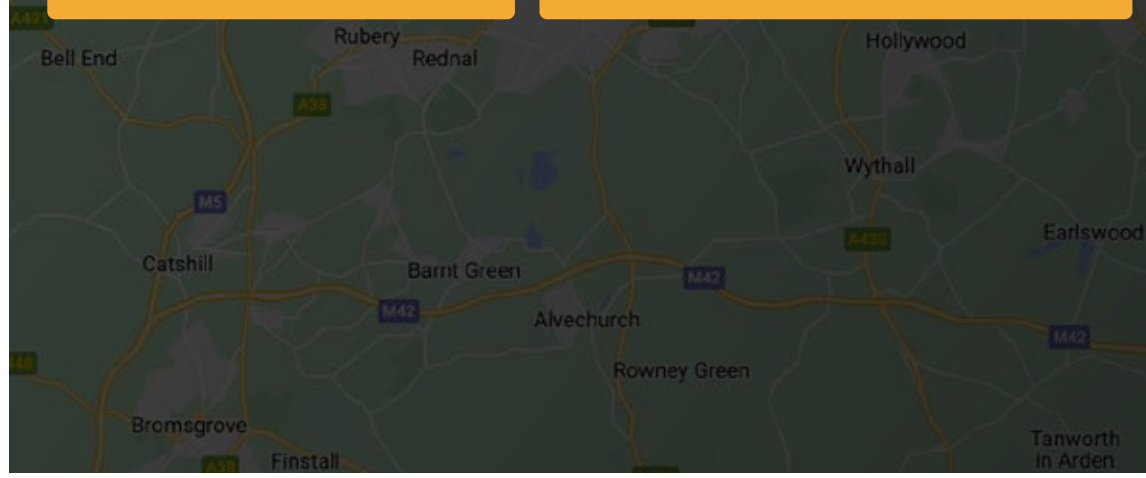
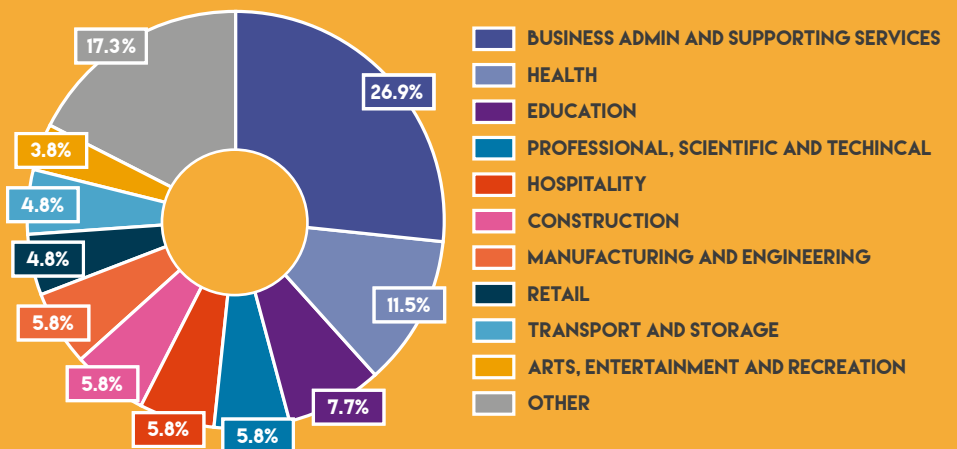
♀ (51.0%) 51,300    49,300 (49.0%) ♂



Ethnic Group	Percentage
WHITE	95.8%
MIXED/MULTIPLE ETHNIC GROUPS	1.5%
ASIAN / BRITISH ASIAN	2.1%
BLACK / BLACK BRITISH	0.5%
OTHER	0.1%



## TOP 10 INDUSTRY SECTORS





# THE BIGGER PICTURE

# REDDITCH



## REDDITCH KEY INDUSTRIES

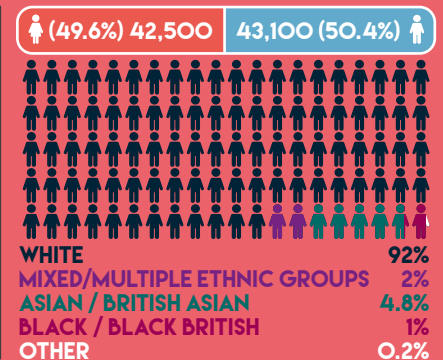
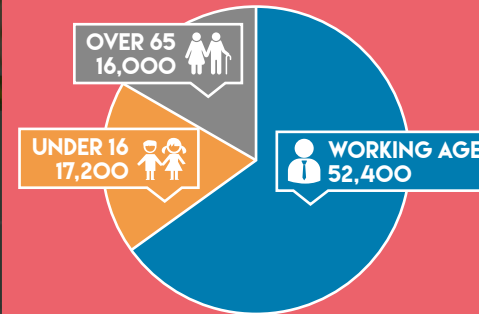
- 1 // MANUFACTURING
- 2 // RETAIL
- 3 // HEALTH

## KEY EMPLOYERS

- HALFORDS LIMITED**  
RETAIL TRADE OF MOTOR VEHICLE PARTS AND ACCESSORIES
- LEXON (UK) LIMITED**  
WHOLESALE OF PHARMACEUTICAL GOODS
- METTIS AEROSPACE LIMITED**  
FORGING, PRESSING, STAMPING AND ROLL FORMING OF METAL; POWDER METALLURGY
- ROCKLINE INDUSTRIES LIMITED**  
OTHER MANUFACTURING N.E.C.
- BLUE EARTH FOODS LIMITED**  
PROCESSING AND PRESERVING OF FISH, CRUSTACEANS AND MOLLUSCS
- MARUBENI - KOMATSU LIMITED**  
WHOLESALE OF MINING, CONSTRUCTION AND CIVIL ENGINEERING MACHINERY
- SPRINGMASTERS LIMITED**  
MANUFACTURE OF WIRE PRODUCTS, CHAIN AND SPRINGS
- AMAZON**  
RETAIL
- NHS**  
HEALTH
- FAUN ZOELLER**  
MANUFACTURING
- HELLER MACHINE TOOLS**  
MANUFACTURING

## REDDITCH KEY INFO

TOTAL POPULATION: 85,600



## TOP 10 INDUSTRY SECTORS

