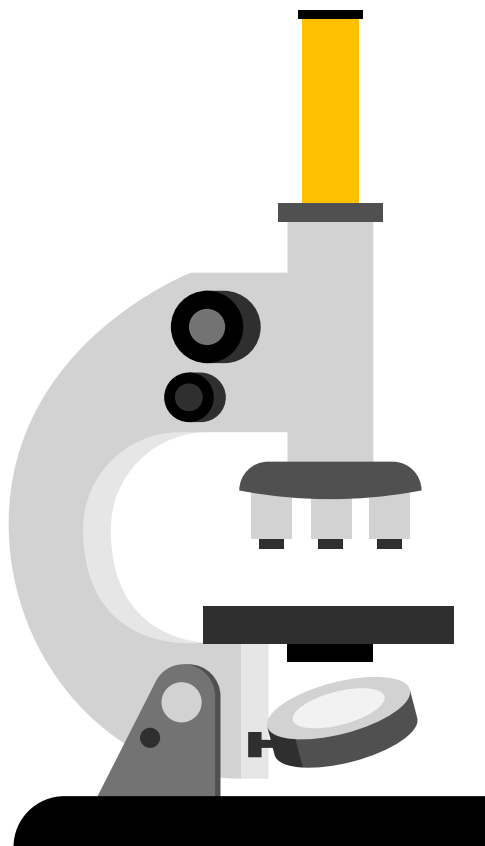


AAQ Human Biology

(Cambridge Advanced National Extended Certificate)



INFORMATION ABOUT THE AAQ HUMAN BIOLOGY COURSE

- Accredited by OCR (Oxford Cambridge and RSA)
- Qualification gained will be Level 3 Alternative Academic Qualification Cambridge Advanced National in Human Biology (Extended Certificate)
- Assessment will be via exam and coursework
- The course is modular so some assessments will take place in the first year and count towards your final grade
- The course includes specified practical work that must be completed by learners to enable completion of some modules and to fully prepare students for exams
- Skills in mathematics, critical thinking, and practical work will be essential

COURSE CONTENT

- Human biology, Health and disease, Genetics and Biomedical techniques
 - Covering human body systems, cell ultrastructure, pathogens and disease symptoms and treatments, fundamentals of genetics and biomedical methods for diagnosis and treatment
- Nutrition and metabolism
 - Covering biochemistry of nutrition and digestion
- Drug development
 - Covering discovery and development of drugs in response to pathogens and diseases

APPROACHES TO LEARNING

Lessons will cover a mixture of theory and practical skills and will be delivered over 4 sessions a week in the biology laboratories. Standard laboratory health and safety applies in every lesson.

Using the exceptional facilities, we have and a range of resources we will supply, including topic packs and online supportive materials, students will have ample opportunity to develop key transferable skills. There will be homework for every lesson and weekly independent study tasks set to ensure you develop vital organisational skills and become a confident independent learner.

ASSESSMENT

Unit number	Unit title	*GLH	How assessed
1	Fundamentals of human biology	80	Exam (external)
2	Health and disease	80	Exam (external)
3	Genetics	50	Coursework (internal)
4	Biomedical techniques	50	Coursework (internal)
5	Nutrition and metabolism	50	Coursework (internal)
6	Drug development	50	Coursework (internal)

**Guided Learning Hours*

Students will be assessed via external exams, internally assessed coursework, and practical observations. Exams will assess the following Performance Objectives:

- PO1 Show knowledge and understanding of scientific concepts and theories, terminology, definitions and scientific formulae
- PO2 Apply knowledge and understanding of scientific concepts and theories, procedures, processes and techniques
- PO3 Analyse and evaluate knowledge, understanding and performance
- PO4 Demonstrate and apply skills relevant to the subject for example: using scientific concepts, procedures, processes and techniques

Internal assessment of coursework will cover a range of learning aims from examining biological pathways to understanding effects of diseases and disorders. Internal assessment will also include demonstrating synoptic learning across different modules.



WHY CHOOSE AAQ Human Biology?

Designed in collaboration with teachers and universities, Cambridge Advanced Nationals equip students with a well-rounded skillset for today's undergraduate studies. This course is designed to lead onto further study at degree level for careers in biology or medical sciences such as clinical biology, paramedic science, midwifery, physiotherapy, biosciences research, biomedical sciences, biomedical research.

Cambridge Advanced Nationals are widely recognised by higher education and industry, providing students with meaningful theory-based and practical learning experiences. The AAQ allows students to study the principles and applications of Human Biology across the examined units and enables students to further explore other areas in more detail through internally assessed coursework modules.

This course is designed to be taken alongside A Levels or other Level 3 applied qualifications. Subjects such as: physical education, sociology, psychology, chemistry, child development would make a good combination.

FAQs

What are the entry requirements for AAQ Human Biology?

- Grade 5 in Biology GCSE or combined science
- Grade 4 in English Language
- Grade 5 in Maths

It is recommended that students study Core Mathematics if they are not already studying A Level Maths.

CONTACT US:

Telephone: 01905 362600

Email: enquiries@wsfc.ac.uk